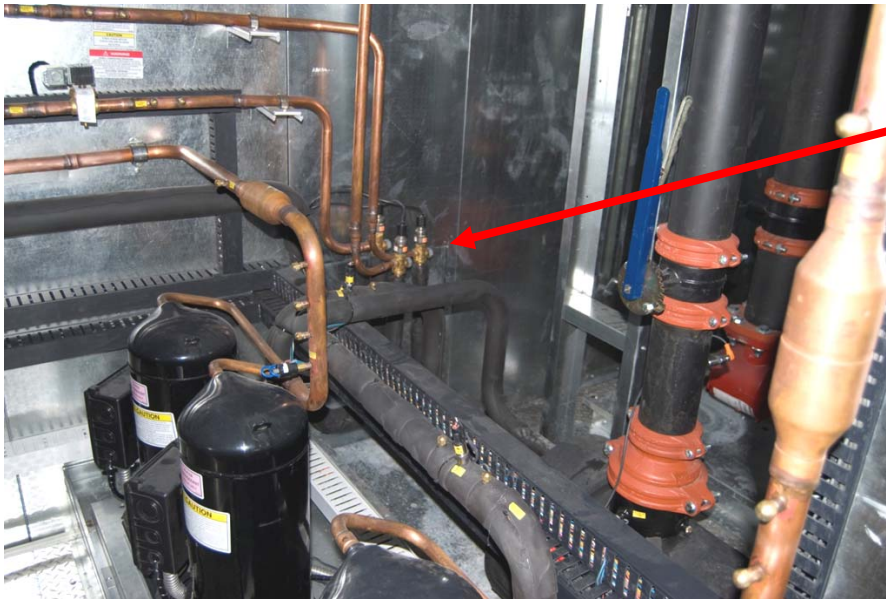




August 8, 2011

## Did you know Electronic Expansion Valves are standard on all AAON LL Series Equipment?

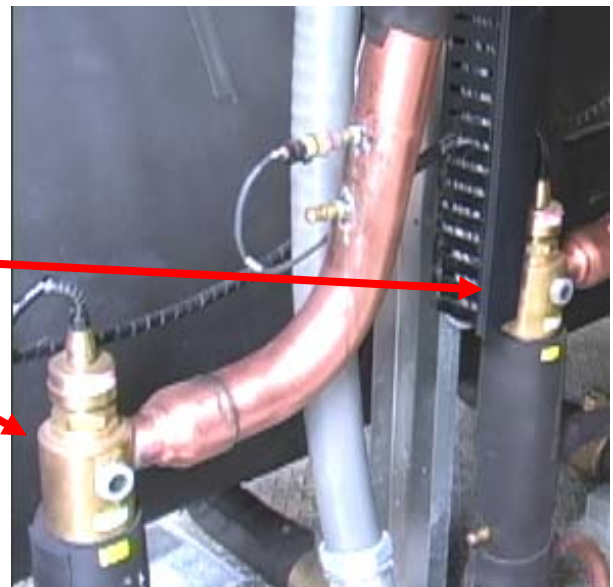
LL Series chillers and outdoor mechanical rooms (35-540 tons) operate at many different ambient and loading conditions. To reduce the likelihood of hunting of the refrigerant expansion valves, all LL Series equipment, with either scroll or centrifugal compressors, now includes electronic expansion valves (EXVs or EEVs). Electronic expansion valves are also available as an SPA on LC Series chillers.



EXVs

LL Series System with Scroll Compressors

EXVs



LL Series System with Variable Capacity Oil-Free Magnetic Bearing Centrifugal Compressors

**Thermal Expansion Valves (TXVs)** are mechanical devices which regulate refrigerant flow to the evaporator by maintaining a nearly constant superheat at the evaporator outlet. TXVs use a remote evaporator outlet sensing bulb.



**TXVs**

**Electronic Expansion Valves (EXVs)** are electromechanical devices which regulate refrigerant flow to the evaporator by maintaining a constant superheat at the evaporator outlet. EXVs use electronic temperature and pressure sensors at the evaporator outlet, an electronic valve, and a DDC controller. The electronic controls allow quicker response to changing loading and ambient conditions, and a larger pressure/temperature operation range.

**EXV Benefits**

- Reduces occurrences of expansion valve hunting
- Improves system performance and leaving water temperature control
- Improves performance of multiple compressor/evaporator systems
- Valve is controlled and monitored by MCS Magnum chiller controller



**EXVs**

Built-in Sight Glass

Contact your local AAON Sales Representative for more information about AAON Chillers and Outdoor Mechanical Rooms with Electronic Expansion Valves.